

PRSRST STD  
US Postage  
PAID  
Raleigh, NC  
Permit No. 1910



PO Box 33189  
RALEIGH NC 27636

*Come Show With Us...*



July 22 - 24, 2016  
Triangle Farms  
Summer Indoors I

August 26 - 28, 2016  
Triangle Farms  
Summer Indoors II

Sept 30 - Oct 2, 2016  
Triangle Farms  
Fall Classic

Points for  
Triangle Farms &  
NCHJA 'C'  
Circuit Awards



*July & August Shows*

\$500 Open Derby  
\$500 Amateur Derby  
\$500 Wee Derby

Jumpers Sat & Sun

*September Show*



\$2500 Triangle Farms  
Derby Finals  
in the Derby Field  
Derby Hospitality

**Back-to-Back NCHJA 'C' Shows**

**Unrecognized Day on Friday**

**Triangle Farms Hospitality**

**DERBY FUN!!**

***Come Show With Us . . .***

Joan Petty, Show Manager  
Triangle Farms, Inc  
(919) 556-7321 or efax (866) 337-4229  
email: [horseshows@trianglefarms.com](mailto:horseshows@trianglefarms.com)  
[www.trianglefarms.com](http://www.trianglefarms.com)

Governor James B. Hunt, Jr. Horse Complex 4601 Trinity Rd., Raleigh, NC 27606

## Information and Regulations

**TRIANGLE FARMS** Summer & Fall 'C' shows are NCHJA 'C' Rated and run in accordance with association rules. Friday is unrecognized. Jumper classes to be held at the July and August shows. POINTS in hunter and jumper divisions and equitation sections to count for 2016 Triangle Farms 'C' Circuit Awards.

**SCHOOLING** is permitted on Thursday, 1PM to 9PM, on show days from 5:30 AM to one hour prior to start time in each ring, and at the completion of the show each day, time permitting.

**STALLS** are available Thursday through Sunday for \$95. Bedding and hay are available upon request. Stall reservation and bedding orders should be made in advance. All non-stabled horses will be charged a grounds fee of \$40.

**ENTRIES** are \$25 per class. All classes must be added or scratched prior to the start of a class. Late fee of \$40 begins at 5:00 PM Thursday. All horses, showing and non-showing, must be entered on the proper entry blank, pay an office/schooling, and a stall or grounds fee. Scratched entries will be refunded entry fees minus the office fee. All non-showing horses must pay the non-showing fee of \$40.

**HELMETS** Protective headgear is required on all exhibitors when mounted on the grounds. Properly fitted protective headgear is required in accordance with USEF GR 801.

**NEGATIVE COGGINS** is required of each horse on the show grounds. NC State Law (effective October 1, 1999) requires that any horse not in possession of a current negative Coggins **MUST** be refused admission to the grounds. A copy of the negative Coggins must be attached to each entry blank in the show office and must be posted on the front of each stall for inspection by the State Veterinarian's office. Fines are passed on to exhibitor.

**JUMP ORDERS**, a dotted line and/or the one minute rule may be imposed.

**DOGS** No dogs will be allowed in the restaurant or dining area. All dogs on the show grounds must be leashed & under control of the owner or responsible person. Violators will be fined \$100.

**CAMPER HOOK-UPS** are available at all show facilities.

**THE MANAGEMENT** reserves the right to reschedule, combine, close, add, or delete any classes or change the announced officials as may be necessary and in the best interest of the show. All entries are made at the rider's, owner's, and trainer's own risk with the understanding that there is an inherent risk in riding horses. Neither Triangle Farms, Inc., Glenn and Joan Petty, the NCHJA, the N.C. State Fair, the management, the officials, nor the employees will be responsible for any accident or loss which may occur to an exhibitor, animal, or equipment at the Triangle Farms Horse Shows. Under North Carolina Law, an equine activity sponsor or equine professional is not liable for an injury to or the death of a participant in equine activities resulting exclusively from the inherent risks of equine activities (Chapter 99E of the North Carolina General Statutes).

### Information and Stabling

Contact Joan Petty, Triangle Farms, Inc.

919/556-7321 Office - 866/337-4229 eFax

www.trianglefarms.com - horseshows@trianglefarms.com

PO Box 33189, Raleigh, NC 27636



### Triangle Farms Summer & Fall 'C' Hospitality

**Morning Hospitality** ~ Show Days 7-9 am

Breakfast Goodies

Coffee & Juice

Apples & Carrots for your horses!!

**Surprise Hospitality** ~ Watermelon? Cupcakes? Ice Cream? Sundaes?

Derby Wine & Cheese

**Compliments of Triangle Farms, Inc.**

## ASK FOR THE HORSE SHOW RATE

Complimentary Hot Breakfast Included

Free Parking

Large Guest Rooms

5 miles from the Horse Complex

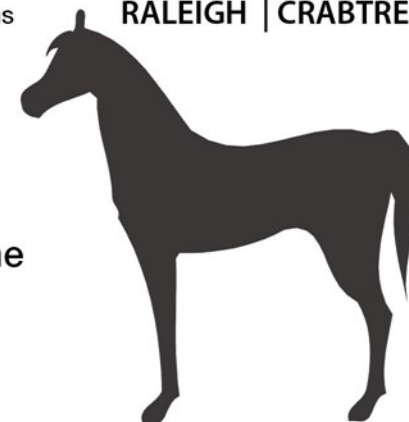
Next to Crabtree Valley Mall

Walk to many Great Dining Options

Pet Friendly

**FAIRFIELD**  
INN & SUITES®  
**Marriott**

RALEIGH | CRABTREE



### Rates

King: \$84

Double Queen: \$94

2201 Summit Park Lane

Raleigh, NC 27612

919.881.9800

[www.FairfieldInnandSuitesRaleighCrabtree.com](http://www.FairfieldInnandSuitesRaleighCrabtree.com)

## TRIANGLE FARMS ACCEPTS CREDIT CARDS

For your credit card processing

& ATM needs please contact

SAFE CA\$H at: 1-866-565-1267

Safe Ca\$h





# RAMADA®

**Sponsoring Triangle Farms Horse Shows**

Come stay with us. . .  
Less than 1 mile to the Horse Show  
Pet Friendly Rooms Available  
Make Reservations early

**\$79 night plus tax  
includes hot breakfast**

Phone: (919) 832-4100

Just mention the Horse Show to  
get the Horse Show rate!

1520 Blue Ridge Road  
Raleigh, NC 27607

## Enjoy Your Stay

AT THE HAMPTON INN & SUITES



Raleigh/Cary I-40 exit 290  
Conveniently located 2 miles from  
Gov. James B. Hunt Jr. Horse Complex

### Hunt Horse Show Special Rates

King Study/Double for \$90\*  
King Whirlpool or Double Business  
Suite \$119\*

**We are pet friendly**

At the Hampton Inn & Suites, we have all  
the conveniences you and your guest need

- Complimentary airport shuttle service
- Complimentary breakfast bar every morning
- Free Local Calls
- Free high-speed wireless internet
- 24 hour workout facility
- Guest reception with beer, wine, and snacks,
- Coin Operated Guest Laundry

111 Hampton Woods Lane, Raleigh, North Carolina 27607  
For additional information or reservations call  
(919) 233-1798

\*All specials and rates are based on availability. .

## Hunt Horse Complex Special Rate \$67<sup>99</sup>



- FREE wireless
- Outdoor Pool
- FREE hot breakfast buffet
- Lobby market
- Less than 3 miles from arena
- Discounts at many local restaurants  
when you show your room key
- Pets welcome!

1722 Walnut Street • Cary, NC 27511  
919.481.1200

[bwca.dos@cmchotels.com](mailto:bwca.dos@cmchotels.com)

Please inquire via email for team rooms of 10 or more.  
Late check out allowed if available.

## ASK FOR THE HORSE SHOW RATE



**King – \$94 + Tax  
Queen/Queen – \$104 + Tax**

Bistro Open for Breakfast & Dinner  
We Proudly Serve Starbucks  
Free Parking  
Large Guest Rooms  
5 Miles from the Horse Complex  
Next to Crabtree Valley Mall

3908 Arrow Drive, Raleigh, NC 27612  
919.782.6868

# Triangle Farms 'C' Shows 'Summer to Fall in Raleigh'

*Back-to-Back NCHJA 'C' Shows*

## Officials

Triangle Farms Summer Indoors I July 22-24, 2016

Judges: Keith Hastings, Clemmons, NC  
Bill Creighton, Greenville, NC  
Joan Boyce (Jumpers), Greensboro, NC  
Steward: Tom Bennett, Apex, NC

Triangle Farms Summer Indoors II August 26-28, 2016

Judges: Merilee Ventura, Carthage, NC  
Rob Jacobs, Aberdeen, NC  
Joan Boyce (Jumpers), Greensboro, NC  
Steward: Loren Kirk, Washington, DC

Triangle Farms Fall Classic Sept. 30-Oct. 2, 2016

Judges: Pat Dodson, Clemmons, NC  
Stella Prescott, Raleigh, NC  
Sorry, No Jumpers!  
Steward: Tom Bennett, Apex, NC

## Management/Staff

Show Management:	Triangle Farms Inc. Joan Petty - 919/556-7321 <a href="mailto:horseshows@trianglefarms.com">horseshows@trianglefarms.com</a>
Announcer/Gate:	Cathie Haller, High Point, NC Kim Cummings, Wake Forest, NC Jordan Rigsbee, Raleigh, NC
Course Designer/TC:	Cam Womble, Louisburg, NC
Secretary/Office:	Sheri Bridges, Raleigh, NC
EMT Services:	David Lanphere
Photographer:	High Time Photography <a href="http://www.hightimephotos.com">www.hightimephotos.com</a>
Farrier:	Steve Prescott, 843-247-3377

*All Other Staff Provided by Triangle Farms, Inc..*  
919/556-7321 Office - 866/337-4229 eFax  
[www.trianglefarms.com](http://www.trianglefarms.com) [horseshows@trianglefarms.com](mailto:horseshows@trianglefarms.com)





***Thank you . . . Triangle Farms  
Business Sponsors***

Dover Saddlery  
Fenwick Equestrian  
Sidelines Magazine  
Cabin Branch Tack Shop  
The Carolinas Equestrian  
Paradise Farm & Tack  
M&M Tack Shop  
Star H Equine Insurance

***Sponsoring Hotels***

Fairfield Inn & Suites - Crabtree  
Courtyard Raleigh - Crabtree  
Ramada Inn - Raleigh  
Hampton Inn & Suites - Raleigh  
Best Western - Cary

*Triangle Farms, Inc. www.trianglefarms.com*



**Application for Membership**  
**North Carolina Hunter Jumper Association**  
PO Box 2874, Huntersville, NC 28070  
919/538-4781

Renewal \_\_\_\_\_ New Member \_\_\_\_\_

I hereby apply for membership for the membership year 20\_\_ and  
enclose a payment of \$\_\_\_\_\_.

Dues: Seniors \$40 Juniors \$30 Farm \$50 (Life) Life \$300

Name: \_\_\_\_\_

Address: \_\_\_\_\_ City/State/Zip: \_\_\_\_\_

Telephone: \_\_\_\_\_ Email: \_\_\_\_\_

Senior: Professional: \_\_\_\_\_ Amateur: \_\_\_\_\_

Amateur: 18-35 \_\_\_\_\_ 36-45 \_\_\_\_\_ 46+ \_\_\_\_\_

Junior: \_\_\_\_\_ Birthdate: \_\_\_\_\_



**Star H**  
**Equine Insurance**



**Butch & Lucinda Human**

**Specializing in:**

- Farm/Ranch Property Insurance
- Equine Liability
- Horse Mortality & Major Medical
- Many other equine related coverages

**1-877-827-4480**

**info@starHinsurance.com**

**www.starHinsurance.com**

*We are horse people with over 35 years of insurance experience!*





# HorseShowsOnline.com

## TimeSlice Technologies Corporation



### Show Management Software

#### Features

Store your documents electronically!  
 Print judges cards from schedules!  
 Simplified networking!  
 Productivity enhancements for speed and efficiency!  
 Self serve show registrations!  
 USEF electronic results submissions and membership verification!  
 Publish your shows FREE to HorseShowsOnline.com!

#### Coming soon

Online show entries!  
 Follow HSO on Twitter! 

**View results at**  
**HorseShowsOnline.com**

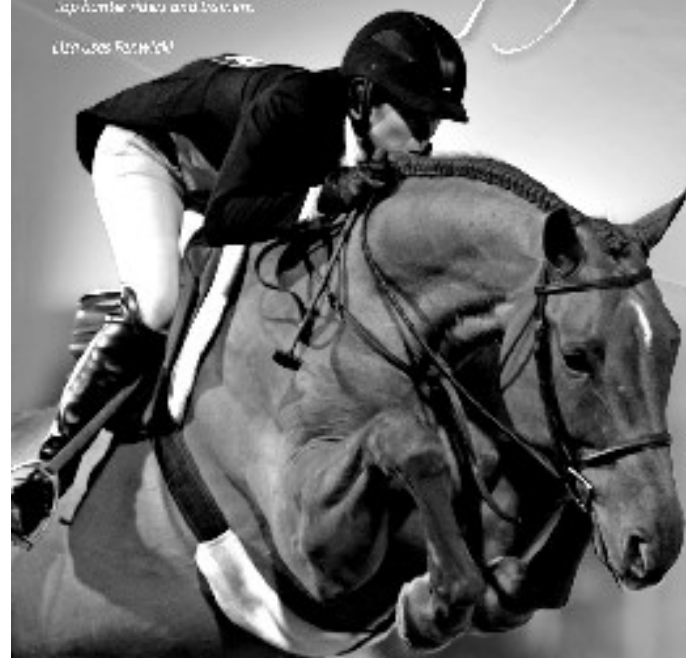
**The Professional's Choice**

**sales@timeslice.ca 905-760-9997**

*Optimize your horse performance!*

Use towel and more of the country's top equestrian and trainers.

Ultimate Results!



Visit Our Website:  
 To Learn More About  
 Fenwick Equestrian

#### Smart Fabrics

Can Make Your Horse  
 Feel Better!  
[www.fenwickequestrian.com](http://www.fenwickequestrian.com)

Follow us on Facebook!



BAMBOO

Adds 20% to your blood to provide more energy.



COOL JADE

This one is great for active horses when the body heats up.



LIQUID TITANIUM

Relieves arthritis and pain through the Far Infrared (FIR).



COFFEE FABRIC

High tech wool fabric. Quick drying, odor resistant.



# *Your Source for Success!*

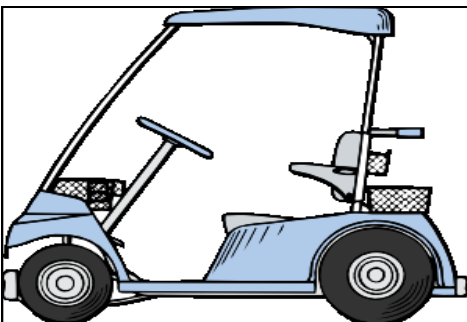


1X259

*Shop the best  
in riding apparel  
and tack*

*Visit our store  
in Raleigh*

FREE CATALOG  
1-800-662-9673  
DoverSaddlery.com



*Need a golf cart for the  
Horse Show??*

Contact Unger Golf Cart Rentals  
Byron Unger (919) 337-7456  
*Advance Reservations  
Requested*



Guaranteed Fresh & Delicious  
Fully Operating Online Cupcakery  
Fresh & Local Ingredients

Katie Womble, Owner  
919-357-8759  
katie@carolinacupcakenc.com  
[www.carolinacupcakenc.com](http://www.carolinacupcakenc.com)

Have a **SWEET** Day!

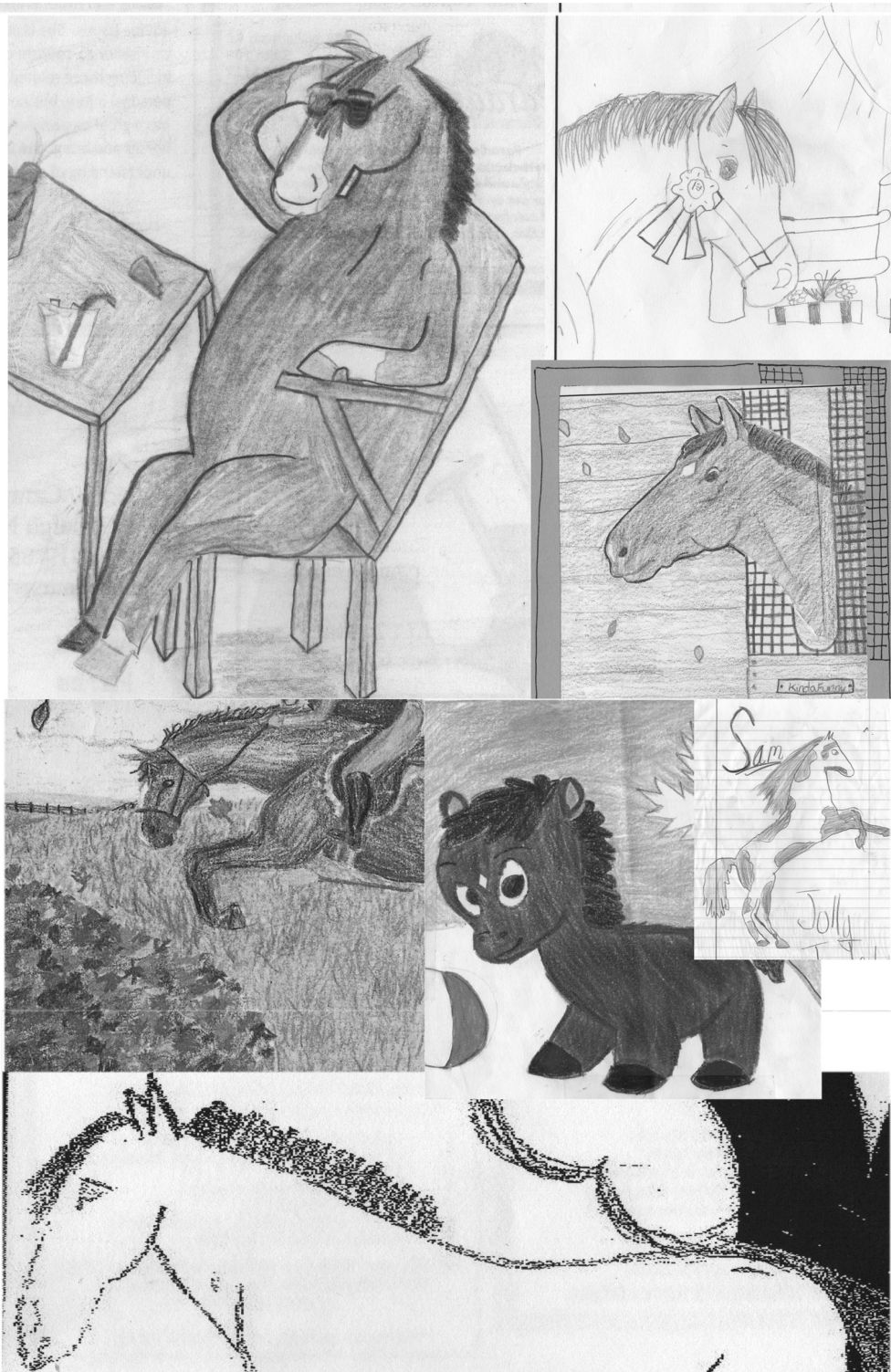
## *Win a Free Stall . . .*

Draw your horse or pony or even your trainer in the box below **enjoying Summer or Fall Fun!!** Submit your drawing to [horseshows@trianglefarms.com](mailto:horseshows@trianglefarms.com), fax to 866/337-4229, or turn in at horse show office by Thursday 5pm prior to the show. The winner receives a free stall at a 2016 Triangle Farms 'C' Show!!

Rider Name: \_\_\_\_\_

Phone or Email: \_\_\_\_\_





## Cam Womble & Audrey Watson

*A lifetime of Experience . . . Offering the Best!*



### Boarding, Training, Lessons, Showing & Sales

Beginner through AA show hunter/jumper training is offered through trainers Cam Womble and Aubrey Watson.

#### Cam Womble

has trained many successful riders to winning champions at some of the nation's most prestigious horse shows. Cam specializes in working with riders who are showing, as well as riders who have the basics on the flat and are ready to begin jumping.

#### Aubrey Watson

brings her expertise from an incredibly successful junior career to her training. Aubrey specializes in working with beginner and intermediate riders, assisting Cam at the shows.

Excellent location .. 15 minutes north of Raleigh!

8140 Mitchell Mill Rd Zebulon, NC 27597

Cam Womble (919)426-5722, [Cam.Womble@gmail.com](mailto:Cam.Womble@gmail.com)

Aubrey Watson (919)669-6556, [adwatson14@gmail.com](mailto:adwatson14@gmail.com)

Managed by Triangle Farms, Inc ~ [www.trianglefarms.com](http://www.trianglefarms.com)



# Stabling Order

Triangle Farms Summer & Fall 'C' Shows

Email to [horseshows@trianglefarms.com](mailto:horseshows@trianglefarms.com) or fax to 866/337-4229

PO Box 33189, Raleigh NC 27636

[www.trianglefarms.com](http://www.trianglefarms.com) 919-556-7321

Please circle ONE below:

Summer I - July 22-24   Summer II - August 26-28   Fall - Sept 30-Oct. 2

	Owners/Horses	# Stalls	Bedding	Hay
1				
2				
3				
4				
5				
6				
7				
8				
9				
10				
11				
12				
13				
14				
	Tack/Grooming Stall(s)			
	Total			

Trainer: \_\_\_\_\_

Mobile Phone: \_\_\_\_\_

Email: \_\_\_\_\_

Arrival: \_\_\_\_\_

Comments: \_\_\_\_\_

*Thanks for showing with us . . .*



# TRIANGLE FARMS



July 22-24, 2016	Triangle Farms Summer Indoors I 'C'
August 26-28, 2016	Triangle Farms Summer Indoors II 'C'
Sept 30-Oct. 2, 2016	Triangle Farms Fall Outdoors Classic 'C'
November 4-6, 2016	Triangle Farms Indoors Finale 'C' NCHJA 'C' Equitation Finals
November 8-13, 2016	'Jump for the Children' 'AA' Benefiting Duke Children's Hospital
December 2-4, 2016	Triangle Farms In the Sandhills 'C' <i>Carolina Horse Park</i>
December 8-11, 2016	Triangle Sandhills Holiday Classic 'A' <i>Carolina Horse Park</i>
December 28-31, 2016	Raleigh Indoors Holiday Classic 'A'
January 20-22, 2017	Triangle Farms Winter Indoors I 'C'
January 26-29, 2017	Raleigh Indoors Winter I 'A'
February 10-12, 2017	Triangle Farms Valentine Indoors 'C' Williamston <i>Sen. Bob Martin Eastern Ag Center</i>
February 23-26, 2017	Raleigh Indoors Winter II 'A'
March 10-12, 2017	Triangle Farms Spring Indoors I 'C'
March 16-19, 2017	Raleigh Indoors Spring Classic 'A'
March 31- April 2, 2017	Triangle Farms Spring Indoors II 'C'
April 21-23, 2017	Triangle Farms Spring Fling Outdoors 'C'
May 18-21, 2017	Triangle Sandhills Spring Classic 'A' <i>Carolina Horse Park</i>

**Triangle Farms, Inc. Horse Show Management** is proud to offer USEF Premiere 'AA' Rated, USEF National 'A' Rated, NCHJA 'C' and NCEHA Rated Hunter Jumper shows at three great North Carolina Show Facilities:

**Carolina Horse Park**  
2814 Montrose Road  
Raeford NC 28376

**Sen. Bob Martin Eastern Ag Center**  
2900 NC Highway 125 S  
Williamston NC 27892

**Gov. James B. Hunt, Jr. Horse Complex**  
4601 Trinity Road  
Raleigh NC 27607

Shows to be held at the Gov. James B. Hunt, Jr. Horse Complex, Raleigh, unless otherwise noted.  
Prize Lists posted on [www.trianglefarms.com](http://www.trianglefarms.com).

Show updates during the show posted on [www.horseshowsonline.com](http://www.horseshowsonline.com)

*Come show with us . . .*

**Celebrate 25 years of Triangle Farms Horse Shows**  
**Glenn & Joan Petty 919-556-7321**

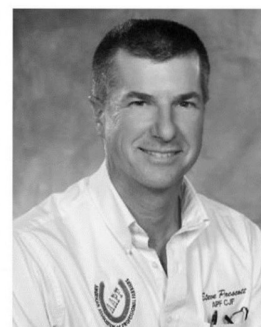
*Calendar*



2500 Campbell Road  
Raleigh NC 27606  
919-854-9892  
campbellnursery@bellsouth.net

**Annuals Perennials**  
**Herbs Shrubs**  
**Container Gardens**

Proud Sponsor of the  
Jump For The Children  
Horse Show  
Benefiting...  
Duke Children's Hospital



**Steve Prescott, Farrier,  
APF, CJF**

www.steveprescottfarrier.com

Telephone: (843) 247-3377

*Serving Raleigh and the surrounding area*

Shoeing Show Hunters, Jumpers and  
Dressage Horses in the  
Southeastern US since 1985

*Let me help put you and your horse  
In the Ribbons!*

**Not Your  
Average  
Tack Store!**

Store location in  
 Mooresville, NC—Open 7  
days a week

Mobile Unit travels to  
shows in NC, SC, VA and  
GA

Shop Online anytime!

Follow us on  
Facebook!

Text ParadiseTack to  
22828 to join  
newsletter

Check out why Paradise Farm &  
Tack has quickly become a key  
destination for riders and all  
their equestrian needs!



807 Williamson Rd  
Suite 108  
Mooresville, NC 28117  
704-664-6773

Paradise Farm & Tack offers unique  
apparel selections from traditional and new brands to  
add style and fun to your riding. Suitable for in the  
barn or out on the town—we all want to look good and  
feel comfortable. For your horse, we offer a wide  
selection of horse clothing, tack, supplements and  
grooming supplies.

info@paradisefarmandtack.com / www.paradisefarmandtack.com



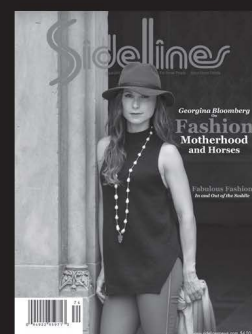
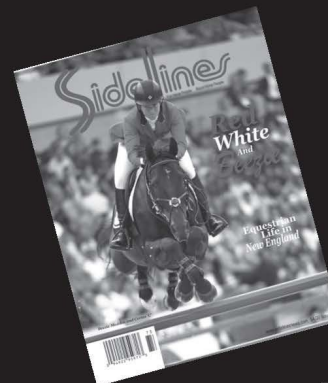
**M & M Tack Shop**

Serving horses and  
their people since 1991

919-851-0102

www.mmtackshop.com

**SIDELINES MAGAZINE**  
**27 YEARS**  
**AND GOING STRONG**



To advertise, please contact

**Jyoti Parry**  
jyoti@sidelinesnews.com  
561.635.0253

**sidelinesnews.com**





**SADDLES**

**TACK**

**RIDING APPAREL**

**SPORTSWEAR**

**LEATHER REPAIR**

**BARN SUPPLIES**



**232 SW BROAD ST  
SO. PINES, NC  
910.692.8241  
www.cabinbranch.com**

**Triangle Farms Fall Classic Sept. 30-Oct. 2, 2016**

**\$2500 Triangle Farms Derby Finals**

**Sunday, October 2, 7:30 am ~ Derby Field**

**Class 201 \$1250 Wee Derby Finals**

**Class 202 \$1250 Amateur Derby Finals**

**Ring I Sat 8:00am Sun - follows Derbies**

- 101/201 Hunter Warm-Up
- 102 Open Hunter 2'6", 2'9" & 3'3"
- 103 Open Hunter
- 104 Open Hunter U/S
- 122/222 Pre-Child/Adult Eq O/F 2'6"
- 123/223 Pre-Child/Adult Hunter 2'6"
- 124/224 Pre-Child/Adult Hunter\*
- 125/225 Pre-Child/Adult Hunter U/S
- 126/226 Pre-Child/Adult Eq Flat
- 105/205 Junior/AO Equitation O/F 3'3"
- 106/206 Junior/Amateur Owner Hunter 3'3"
- 107/207 Junior/Amateur Owner Hunter\*
- 108/208 Junior/Amateur Hunter U/S
- 109/209 Junior/AO Equitation Flat
- 110/210 NCHJA 'C' Adult Eq 2'9"
- 111/211 Adult Amateur Hunter 2'9"
- 112/212 Adult Amateur Hunter \*
- 113/213 Adult Amateur Hunter U/S
- 114/214 NCHJA 'C' Children's Eq 2'9"
- 115/215 Children's Hunter 2'9"
- 116/216 Children's Hunter \*
- 117/217 Children's Hunter U/S
- 118/218 Equitation 12-14 Flat
- 119/219 Equitation 15-17 Flat
- 120/220 Equitation 12-14 O/F 2'3"-2'6"
- 121/221 Equitation 15-17 O/F 2'9"-3'

*\*First Round Score for the Derby*

**Ring II Sat 8:00am Sun - follows Derbies**

- 130/230 Walk/Trot Equitation Flat
- 131/231 Walk/Trot Pleasure
- 132/232 Walk/Trot Canter
- 133/233 Walk/Trot Hunter U/S
- 134/234 Young Entry Warm-Up 18"
- 135/235 Young Entry Hunter O/F 18"
- 136/236 Young Entry Hunter O/F
- 137/237 Young Entry Hunter U/S
- 138/238 Young Entry Equitation Flat
- 140/240 Hunter Warm-Up
- 166 Schooling Hunter 2' & 2'6"
- 167 Schooling Hunter
- 168 Schooling Hunter U/S
- 155/255 Short Stirrup Eq O/F 2'
- 156/256 Short Stirrup Hunter O/F 2'
- 157/257 Short Stirrup Hunter O/F \*
- 158/258 Short Stirrup Hunter U/S
- 159/259 Short Stirrup Eq Flat
- 160/260 Long Stirrup Eq O/F 2' & 2'6"
- 161/261 Long Stirrup O/F 2' & 2'6"
- 162/262 Long Stirrup Hunter O/F \*
- 163/263 Long Stirrup Hunter U/S
- 164/264 Long Stirrup Eq Flat
- 141/241 NCHJA 'C' Pony Equitation
- 142/242 Large Pony Hunter 2'6"
- 143/243 Large Pony Hunter \*
- 144/244 Large Pony Hunter U/S
- 145/245 Sm/Med Pony Hunter 2' & 2'3"
- 146/246 Sm/Med Pony Hunter \*
- 147/247 Sm/Med Pony U/S
- 148/248 Children's Pony Eq O/F 2'&2'6"
- 149/249 Children's Pony O/F 2'&2'6"
- 150/250 Children's Pony O/F\*
- 151/251 Children's Pony U/S
- 152/252 Children's Pony Eq Flat
- 153/253 11&Under Equitation Flat
- 154/254 11&Under Eq O/F 2' -2'3"

**Class Specifications**

**Short Stirrup Hunter, Pony Hunter, Children's Hunter, Adult Amateur Hunter, Jr/AO Hunter, Pre-Ch/Ad Hunter, Age Group Eq, NCHJA Equitation Medals, and Ch/Ad Jumpers** are run in accordance with NCHJA rules. **Walk-Trot** is open to beginner riders; may not cross enter into any other division. **Young Entry** is open to junior riders in their first 2 years of showing; may not cross enter into any other division. Crossrails to be added for adults if entries warrant. Walk Trot & Young Entry to be divided, 12 & Under and 13 & Over, if entries warrant. **Long Stirrup** is open to riders over 12 years of age. **Pre-Green Hunter** is open to horses in their first 2 years of showing. **Green Hunter** is open to horses who have not shown over fences exceeding 3' at NCHJA or USEF shows. **Schooling, Low, Hopeful, Modified, Open, and Special** are open to all horses and riders.

**#100 classes are Saturday classes**

**#200 classes are Sunday classes**

**Need a Golf Cart??**

**Call Byron 919-337-7456**

# The CAROLINAS EQUESTRIAN®

This complimentary publication (available in digital and print formats) and monthly e - newsletter captures the passion for the land, the people, their interests and the common denominator that brings them all together ... the horse.

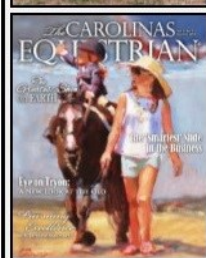
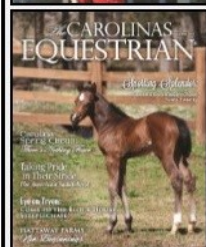
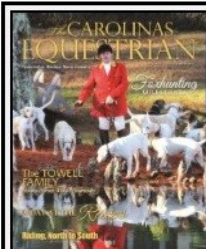
**www.thecarolinasequestrian.com**

Sally Kay, Owner & Publisher

Shannon Habenicht

Director of Marketing & Ad Sales

704.779.6502 / tweshannon@yahoo.com





## Triangle Farms Fall Classic Sept. 30-Oct. 2, 2016

Tentative Schedule

### Day 1 Ring I 8:00am

1	Hunter Warm-Up	14	Special Hunter 3'3", 2'9" & 2'6"
2	Low Hunter 2'3", 2'6", 2'9"	15	Special Hunter
3	Low Hunter	16	Special Hunter U/S
4	Low Hunter U/S		
5	Pre-Green 2'3" & 2'6"		
6	Pre-Green		
7	Pre-Green U/S		
8	Green Hunter 2'6", 3'		
9	Green Hunter		
10	Green Hunter U/S		
11	Modified Hunter 2'9", 3', 3'3"		
12	Modified Hunter		
13	Modified Hunter U/S		

### Day 1 Ring II, Completion of Ring I

18	Hunter Warm-up
19	Hopeful Hunter 2' & 2'6"
20	Hopeful Hunter
21	Hopeful Hunter U/S
22	Schooling Pony 2'6" & 2'
23	Schooling Pony
24	Schooling Pony U/S

### \$2500 Triangle Farms Derbies ~ Specs ~ Sept 30-Oct. 2 Show

Open to non-professional riders on horses or ponies showing at the September show. Two Derbies to be held, Wee Derby Finals & Amateur Derby Finals, each Derby to award \$1250 prize money & \$100 to each Derby winner's trainer. Ribbons, awards & prize money to be awarded to the top 12 riders.

The first round of the Derby will be the score from the second hunter round on Saturday, must be entered in the Derby to get a score. The top 12 riders to come back to ride the second Derby round on Sunday morning, jumping the same fence height as the first round. The second Derby round to be an expanded course in the Derby Field using both outdoor rings, to include a Bending Line, one line with an unrelated distance and at least one fence with a long approach and high options.

Schooling on the flat in the Derby ring to be available on Sunday, 6am—6:30am. The regular schedule of Sunday classes to start immediately following the Derby Finals.

### Triangle Farms Fall Featured Events

Triangle Farms Pig Pickin' Saturday 5:00 PM

"Bubbly" Derby Hospitality Sunday 7:30AM

### Featured Events in the Derby Field

**Class 200 ~ Triangle Farms Lead Line No Entry Fee Sunday 7:30am**

**Class 201 ~ \$1250 Triangle Farms Wee Derby Finals Sunday, 7:30am**

Open to riders showing in Short Stirrup, Long Stirrup, Small/Medium Pony, Large Pony & Children's Pony **Fence heights: 2', 2'3", 2'6" Entry Fee: \$100**

**Prize Money:** \$250, \$200, \$150, \$150, \$100, \$100, \$75, \$75, \$50, \$50, \$25, \$25

**Class 202 ~ \$1250 Triangle Farms Amateur Derby Finals Sunday, 9:00am**

Open to riders showing in Pre-Child/Adult Hunter, Junior/Amateur, Adult Hunter & Children's Hunter **Fence heights: 2'6", 2'9", 3', 3'3" Entry Fee: \$100**

**Prize Money:** \$250, \$200, \$150, \$150, \$100, \$100, \$75, \$75, \$50, \$50, \$25, \$25



**Morgan Womble GROUP**



The Morgan Womble Group is proud to be the exclusive Realtor® for Triangle Farms Horse Shows. A full service real estate group based in North Raleigh/ Wake Forest, we market and sell homes, horse farms and recreational land.

Give us a call TODAY and see what we can do for you and your family!

**919-556-9849**

[womble.group@allentate.com](mailto:womble.group@allentate.com)

## Featured Properties



### 12+ AC HORSE FARM

4BR/3FBA/2HBA home in prime Apex location, detached garage/workshop w/apt.; 4-stall barn, tack room, wash rack & lots of storage; fenced pastures; picturesque pond; minutes from Jordan lake and I540.

MLS#2070048



### 98+ AC HORSE/CATTLE FARM

3BR/2BA log home; 8-stall barn, tack room, wash rack, hay and feed storage, run-in sheds, fenced pastures, indoor arena, riding trails, equipment storage; minutes from Wake Forest, easy access to HWY 64.

MLS#2066250

**Contact the Horse Farm Specialists Today -  
Morgan Womble Group!**

## Triangle Farms Summer Indoors July 22-24 and August 26-28

### Friday Ring I - 8:00 am Unrecognized Day

- 1 Hunter Warm-Up
- 2 Low Hunter 2'3", 2'6", 2'9"
- 3 Low Hunter \*
- 4 Low Hunter U/S
- 5 Pre-Green 2'3" & 2'6"
- 6 Pre-Green\*
- 7 Pre-Green U/S
- 8 Green Hunter 2'6", 3'
- 9 Green Hunter\*
- 10 Green Hunter U/S
- 11 Modified Hunter 2'9", 3', 3'3"
- 12 Modified Hunter \*
- 13 Modified Hunter U/S
- 14 Special Hunter 3'3", 2'9" & 2'6"
- 15 Special Hunter\*
- 16 Special Hunter U/S
- \*First Round Score for the Derby
- 17 **\$500 Open Hunter Derby**  
**2nd Round - 2'6", 2'9", 3' & 3'3"**

### Day 1 Ring II

#### At Completion of Indoor

- 18 Hunter Warm-up
- 19 Hopeful Hunter 2' & 2'6"
- 20 Hopeful Hunter
- 21 Hopeful Hunter U/S
- 22 Schooling Pony 2'6" & 2'
- 23 Schooling Pony
- 24 Schooling Pony U/S

### Triangle Farms Hunter Derbies

#### Class 17 \$500 Open Hunter Derby

Open to Pro & Non-Pro Riders  
2'6", 2'9", 3' & 3'3"

#### Class 128 \$500 Amateur Hunter Derby

Open to Junior/AO, Adult Amateur, Children's &  
Pre-Child/Adult Riders  
2'6", 2'9" & 3'3"

#### Class 167 \$500 Wee Hunter Derby

Open to Short Stirrup, Long Stirrup,  
Sm/Med/Large Pony Riders  
2', 2'3" & 2'6"

### Derby Specifications

First Round of the Hunter Derby to be the score from the 2nd hunter round of the respective division, the numerical score to be the 1st round score for the Derby. The top 12 exhibitors to be called back to compete in the 2nd round of the Derby. The second round to include a Bending Line, one line with an unrelated distance and at least one fence with a long approach, high options at the discretion of the Course Designer. Obstacles to simulate those reminiscent of the hunter field. Proper attire required. Must be entered to be eligible for second round. 8 exhibitors to fill. Entry Fee \$50.

*Join us for Derby  
Wine & Cheese during  
the Derbies*

#### Class Specifications

Short Stirrup Hunter, Pony Hunter, Children's Hunter, Adult Amateur Hunter, Jr/AO Hunter, Pre-Ch/Ad Hunter, Age Group Eq, NCHJA Equitation Medals, and Ch/Ad Jumpers are run in accordance with NCHJA rules. Walk-Trot is open to beginner riders; may not cross enter into any other division. Young Entry is open to junior riders in their first 2 years of showing; may not cross enter into any other division. Crossrails to be added for adults if entries warrant. Walk Trot & Young Entry to be divided, 12 & Under and 13 & Over, if entries warrant. Long Stirrup is open to riders over 12 years of age. Pre-Green Hunter is open to horses in their first 2 years of showing. Green Hunter is open to horses who have not shown over fences exceeding 3' at NCHJA or USEF shows. Schooling, Low, Hopeful, Modified, Open, and Special are open to all horses and riders.

## Triangle Farms Summer Indoors July 22-24 and August 26-28

### Sat/Sun Ring I 8:00am

- 101/201 Hunter Warm-Up
- 102/202 Open Hunter 2'6", 2'9", 3' & 3'3"
- 103/203 Open Hunter
- 104/204 Open Hunter U/S
- 105/205 Junior/AO Equitation O/F 3' & 3'3"
- 106/206 Junior/Amateur Owner Hunter 3' & 3'3"
- 107/207 Junior/Amateur Owner Hunter\*
- 108/208 Junior/Amateur Hunter U/S
- 109/209 Junior/AO Equitation Flat
- 110/210 NCHJA 'C' Adult Eq 2'9"
- 111/211 Adult Amateur Hunter 2'9"
- 112/212 Adult Amateur Hunter \*
- 113/213 Adult Amateur Hunter U/S
- 114/214 NCHJA 'C' Children's Eq 2'9"
- 115/215 Children's Hunter 2'9"
- 116/216 Children's Hunter \*
- 117/217 Children's Hunter U/S
- 118/218 Equitation 12-14 Flat
- 119/219 Equitation 15-17 Flat
- 120/220 Equitation 12-14 O/F 2'3"-2'6"
- 121/221 Equitation 15-17 O/F 2'9"-3'
- 122/222 Pre-Child/Adult Eq O/F 2'6"
- 123/223 Pre-Child/Adult Hunter 2'6"
- 124/224 Pre-Child/Adult Hunter\*
- 125/225 Pre-Child/Adult Hunter U/S
- 126/226 Pre-Child/Adult Eq Flat
- \*First Round Score for the Derby
- 127 **Triangle Farms Leadline**
- 128 **\$500 Amateur Derby**  
**2nd Round - 2'6", 2'9", 3'3"**

### Sat/Sun Ring 3 Jumpers 10:00am

- 300/400 Blue/Red Jumper Warm-up (Open w/class)
- 301/401 Training Jumper (0.75m) II.2b
- 302/402 Training Jumper (0.85m) II.2b
- 303/403 Low Ch/Ad Jumper (0.85m) II.2b
- 304/404 Low Ch/Ad Jumper (0.85m) II.1
- 305/405 Low Ch/Ad Jumper (0.85m) II.2a
- 306/406 Training Jumper (0.95m) II.2b
- 307/407 Training Jumper (1.10m) II.2b
- 308/408 Training Jumper (1.15m) II.2b
- 309/409 Training Jumper (1.00m) II.2b
- 310/410 Ch/Ad Jumper (1.00m) II.2b
- 311/411 Ch/Ad Jumper (1.00m) II.1
- 312/412 Ch/Ad Jumper (1.00m) II.2a

### Sat/Sun Ring II 8:30am

- 130/230 Walk/Trot Equitation Flat
- 131/231 Walk/Trot Pleasure
- 132/232 Walk/Trot Hunter U/S
- 133/233 Walk/Trot Canter
- 134/234 Young Entry Warm-Up 18"
- 135/235 Young Entry Hunter O/F 18"
- 136/236 Young Entry Hunter O/F
- 137/237 Young Entry Hunter U/S
- 138/238 Young Entry Equitation Flat
- 139/239 Hunter Warm-Up
- 140/240 Schooling Hunter 2' & 2'6"
- 141/241 Schooling Hunter
- 142/242 Schooling Hunter U/S
- 143/243 NCHJA 'C' Pony Equitation
- 144/244 Large Pony Hunter 2'6"
- 145/245 Large Pony Hunter \*
- 146/246 Large Pony Hunter U/S
- 147/247 Sm/Med Pony Hunter 2' & 2'3"
- 148/248 Sm/Med Pony Hunter \*
- 149/249 Sm/Med Pony U/S
- 150/250 Children's Pony Eq O/F 2'&2'6"
- 151/251 Children's Pony O/F 2'&2'6"
- 152/252 Children's Pony O/F\*
- 153/253 Children's Pony U/S
- 154/254 Children's Pony Eq Flat
- 155/255 11&Under Equitation Flat
- 156/256 11&Under Eq O/F 2' -2'3"
- 157/257 Short Stirrup Eq O/F 2'
- 158/258 Short Stirrup Hunter O/F 2'
- 159/259 Short Stirrup Hunter O/F \*
- 160/260 Short Stirrup Hunter U/S
- 161/261 Short Stirrup Eq Flat
- 162/262 Long Stirrup Eq O/F 2' & 2'6"
- 163/263 Long Stirrup O/F 2' & 2'6"
- 164/264 Long Stirrup Hunter O/F \*
- 165/265 Long Stirrup Hunter U/S
- 166/266 Long Stirrup Eq Flat
- \*First Round Score for the Derby
- 167 **\$500 Wee Hunter Derby**  
**2nd round - 2', 2'3", 2'6"**

#100/#300 classes are Saturday classes  
#200/#400 classes are Sunday classes

**Need a Golf Cart??**  
**Call Byron 919-337-7456**



# SAVE THE DATE!

## November 8-13, 2016



Join us as a Duke Children's Sponsor at the 'Jump for the Children' Horse Show in Raleigh... November 8-13, 2016  
Help us continue to 'Make a Difference' for children at Duke Children's Hospital!!

_____ Grand Prix Title Sponsor	\$50,000	Sponsor Name (as to be listed in prize list)
_____ Grand Champion Sponsor	\$10,000	
_____ Diamond Sponsor	\$5,000	
_____ Platinum Sponsor	\$3,000	Address _____
_____ Farm Sponsor	\$2,000	
_____ Gold Sponsor	\$1,000	
_____ Silver Sponsor	\$500	Phone _____
_____ Bronze Sponsor	\$400	Email _____
_____ Winner's Circle Sponsor	\$300	
_____ Stick Horse Sponsor	\$200	My Company will Match my donation _____
_____ Friend of the Children	\$100	

Your Sponsorship is personally tax deductible and due by September 1, 2016. Please make your sponsor check to Duke Children's Hospital and Health Center (Fed ID #56-0532129) and mail to 'Jump for the Children' PO Box 33189, Raleigh, NC 27636 or pay online at [www.jumpforthechildren.org](http://www.jumpforthechildren.org).

For Information: Joan Petty (919) 669-9877

Bridget MacNair (919) 795-0511

[joan.petty@me.com](mailto:joan.petty@me.com)

[bridgetgibbons64@gmail.com](mailto:bridgetgibbons64@gmail.com)



'Jump for the Children'

### SAVE THE DATES...!

The Duke Show  
'Jump for the Children'  
making a difference at Duke Children's Hospital !!

NOVEMBER 8-13, 2016

Gov. James B. Hunt Horse Complex, Raleigh, NC  
USEF Heritage Competition ~ Premier Hunters

\$50,000 Duke Children's Grand Prix

\$10,000 Welcome Jumper ~ \$10,000 International Derby

Join us as a Sponsor for Duke Children's

... 'because nothing matters more'!



And... Join us in  
SPONSORING  
'Jump for the Children'  
Horse Show  
to Help

## Duke Children's Hospital !!



# ONE ENTRY BLANK PER OWNER PER SHOW

Please circle one date below:

July 22-24, 2016    August 26-28, 2016    Sept. 30-Oct. 2, 2016

Triangle Farms, Inc.  
Joan Petty, Manager  
PO Box 33189, Raleigh NC 27636  
919/556-7321 Office ~ 866/337-4229 eFax

INFORMATION, STALLS & BEDDING:  
Joan Petty, 919/556-7321  
866/337-4229 eFax  
horseshows@trianglefarms.com  
Negative Coggins Required for Admission to Grounds  
Must be displayed on stall

Name of Horse			Rider 1 Name	Rider Age	Rider 1 Class Numbers
Horse	Pony Size	Color	Rider 2 Name	Rider Age	Rider 2 Class Numbers
	S   M   L				

All entries are made at the rider's, owner's, and trainer's own risk with the understanding that there is an inherent risk in riding horses. Triangle Farms, Inc., Glenn and Joan Petty, the NCHJA, N.C. State Fair, management, officials, and/or the employees will not be responsible for any accident or loss which may occur to an exhibitor, animal, or equipment at the Triangle Farms Horse Shows. Under North Carolina Law, an equine activity sponsor or equine professional is not liable for an injury to or the death of a participant in equine activities resulting exclusively from the inherent risks of equine activities. Chapter 99E of the North Carolina General Statutes.

## In Case of Emergency, I am Staying at:

☐ Best Western 919-481-1200                      ☐ Ramada Inn 919-832-4100  
☐ Fairfield Inn Crabtree 919/881-9800                      ☐ Hampton Inn 919-233-1798  
☐ Courtyard 919/782-6868                      ☐ Fair Grounds Camping

Late Fee of \$40 begins at 5:00 pm on Thursday, all faxed entries must be received by Wednesday.

PLEASE PRINT CLEARLY      Need a Golf Cart: Call Byron 919-337-7456

	Entry Fees @ \$25/class	
	Derbies (July/August) @ \$50	
	Triangle Farms Derby Finals (Sept) @ \$100	
	Stalls @ \$95	
	Late Fee @ \$40	
	Office/Schooling Fee @ \$40	
	Non-Stall Fee @ \$40	
	Non-Showing Horse @ \$40	

**Stall with (Trainer Name):**

**Bedding Order :**

**Arrival:**

Owner's Name: _____  NCHJA Number: _____  Address: _____  City/State: _____ Zip: _____  Phone: _____  Cell: _____  E-mail: _____  Signature: _____ (Must be 18 to sign or parent/trainer/guardian)	Trainer's Name: _____  NCHJA Number: _____  Address: _____  City/State: _____ Zip: _____  Phone: _____  Cell: _____  E-mail: _____  Signature: _____ (Must be 18 to sign or parent/trainer/guardian)	Rider's Name: _____  NCHJA Number: _____  Address: _____  City/State: _____ Zip: _____  Phone: _____  Cell: _____  E-mail: _____  Signature: _____ (Must be 18 to sign or parent/trainer/guardian)
---	---	---